



duelco
CLICKSYSTEM solutions





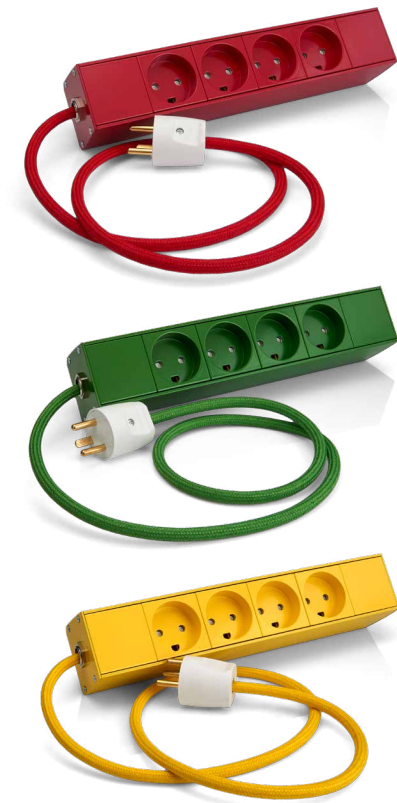
Electrical panels

Duelco offers a wide selection of electrical panels adapted to individual national standards for countries such as Finland, Denmark, UK, USA, France, Sweden, Norway and Germany, as well as device sockets in accordance with IEC 320.

Duelco electrical panels are unique systems that meet the criteria set forth as part of the ClickSystem concept.

This is a complete installation system, eliminating the need for boxes behind installed equipment such as electrical panels, switches and computer connectors.

These electrical panels can be adapted entirely according to your preferences; socket types, number of sockets, panel length, cable lengths, colours and so forth.





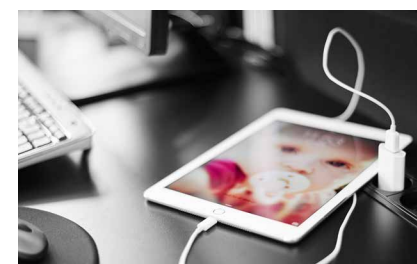
Power panels in desks

Reliable power and data connections are a must for every workplace. Power for computers, monitors, lamps and mobile phones is always needed at desks, conference tables or reception desks or in lounges.

Different connection types are also required – network sockets for the Internet and telephones, projector connections or audio sockets for speakers, for instance.

To solve this challenge, we have developed Duelco Power Panels and the Desk & Table Box. These give us the option of incorporating both power sockets and data sockets such as PDS/network sockets, USB, HDMI, VGA and numerous other sockets in a single panel.

The power panel can either be simply placed in a cable tray under the table, or it can be mounted above or beneath the table using brackets of various kinds. It can also be built into the desk using our installation frames. This means you will always have the right sockets to hand whenever you need them.





Electrical panels with data

There has been a noticeable increase in demand for electrical panels with a combination of power sockets, USB and PDS sockets for worksite data installation.

Duelco has developed a complete and approved selection of electrical panels for this purpose. These electrical and data panels are based on the ClickSystem installation system, offering maximum flexibility to meet any and all customer requirements.

The hallmark of Duelco electrical and data panels is that they can be supplied in any conceivable form. As far as design is concerned, the standard versions come with black, white and grey sockets (PDS and power). Besides standard panels with PDS and 230V sockets, Duelco also offers specially designed panels with VGA, audio, USB and fibre sockets and other options.



Electrical panels references

- **Telia**
600 panels
- **Middelfart Town Hall**
500 panels
- **ATP**
more than 2500 panels
- **Skt. Petri Hotel**
600 panels in 300 rooms
- **Telenor Pakistan, Singapore, Oslo, etc.**
more than 2000 panels
- **Siemens Oslo, Bergen**
700 panels
- **DSV**
700 panels
- **Dansk Industri**
350 panels
- **A.P. Møller & hustru Chastine Mc. Kinney
Møllers fond – Panum Institute**
800 panels
- **Lego System**
1000 panels
- **Danish Court Administration**
350 panels



Duelco A/S - Aalborg
Systemvej 8
DK-9200 Aalborg SV

Duelco A/S - Sønderborg
Mommarkvej 5
DK-6400 Sønderborg

Tel. +45 7010 1007
Fax: +45 7010 1008
www.duelco.dk/en/electrical-panels
info@duelco.dk